



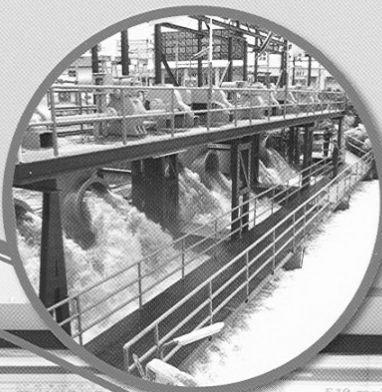
กรุงเทพมหานคร
ร่วมสร้าง
กรุงเทพฯ
น.ร.อ.สุวิทย์ บัณฑิต
ผู้อำนวยการศูนย์ควบคุมน้ำ

มหานครแห่งความปลอดภัย

Flood Control Center

Bangkok Metropolitan Administration

The BMA's Flood Control Center is situated on the sixth floor of the Department of Drainage and Sewerage Building, Bangkok City Hall 2, Din Daeng District. It conducts water management via collection of real-time water-level data from its telemetering units around the city on both the Phra Nakhon and Thon Buri flanks of the Chao Phraya River. Computerized data processing allows the Center to respond to problems accurately and efficiently.



Flood Monitoring System

Flo



Weather Radar System
1 system



Automatic Weather System
52 stations



Rainwater Quantity Checking
System
127 stations



Road Flood Monitoring System
101 points



Water-level Gauging
System in Canals
115 points



CCTV
47 points



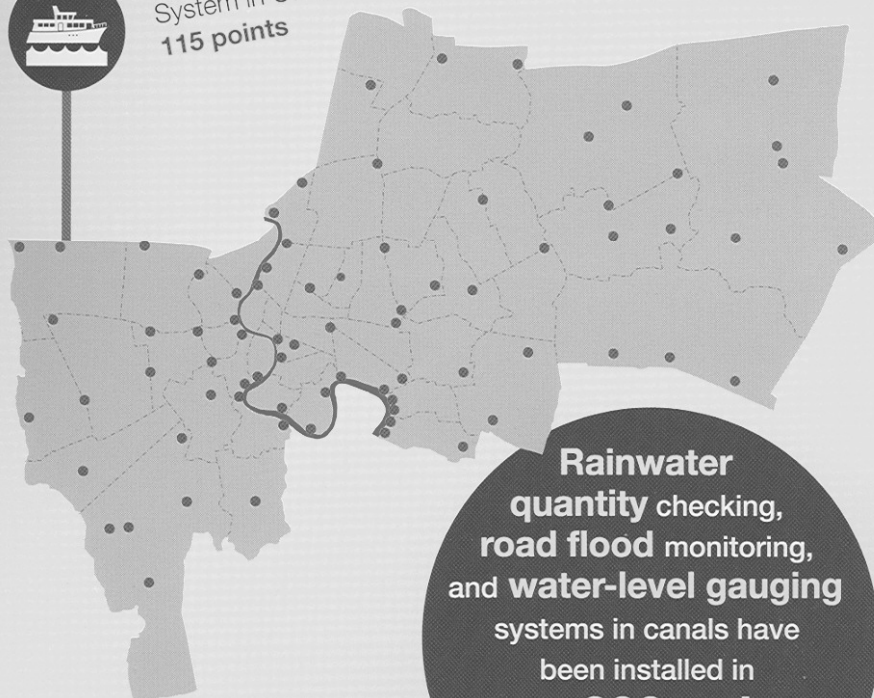
Flow Rate Metering System
28 points



Regulator Operation
Monitoring System
54 points



Pump Operation Monitoring
System
35 points



Rainwater quantity checking, road flood monitoring, and water-level gauging systems in canals have been installed in over 300 points around the city.



Weather Radar



Automatic Weather System



Rainwater Quantity Checking System



Road Flood Monitoring System



Water-level Gauging System in Canals



Flow Rate Metering System

Meas
sys

tele
sta

Online

Related agencies

- Royal Irrigation Department (RID)
- Thai Meteorological Department (TMD)
- Hydrographic Department
- Metropolitan Electricity Authority (MEA)
- Royal Thai Police



Internet network



Telephone

Data
Delivery
System

- People
- Agencies/ organizations
- Mass media
- Others



Facebook



Twitter



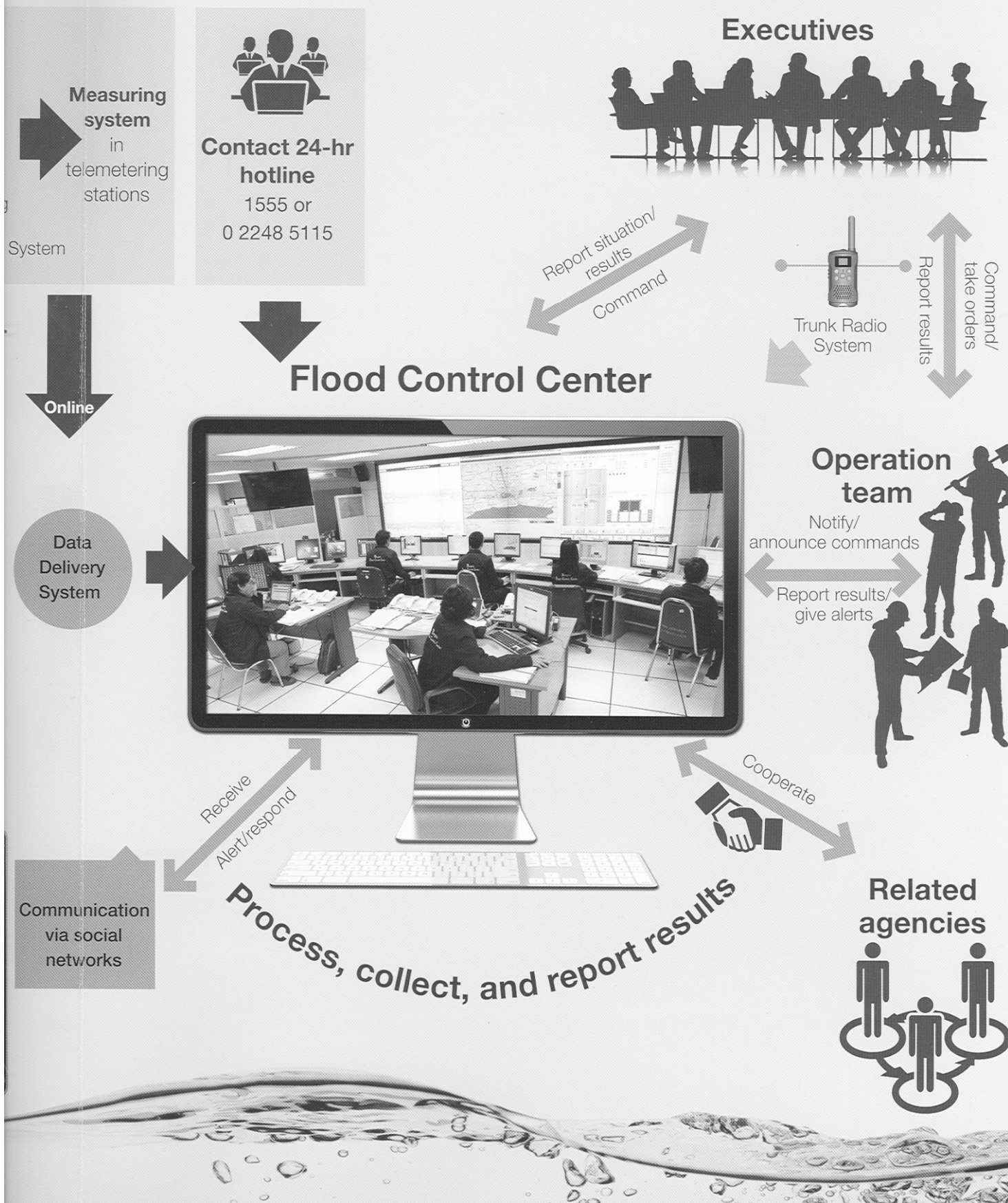
Line



Website

Communic
via soci
network

Flood Control Center Operation



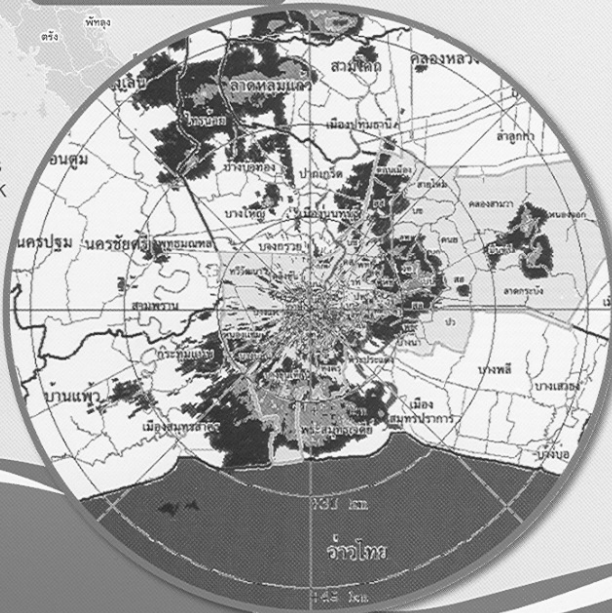
The Weather Radar System

detects precipitation events approaching Bangkok and notifies the forecasted zones to the Center via electronic data updated every five minutes.

- Khlong Bang Phai Station: 240 km range
- Khlong Bang Phai Station: 480 km range
- Nong Chok Station: 240 km range
- Nong Chok Station: 480 km range

During 2005-2014, a weather radar station was installed in the Flood Prevention Center on the Thon Buri office at Phasi Charoen District. It covers 60 km of effective range (120-km Spectral Width). In 2015 three more stations will be established.

Spectral width of radar stations around Bangkok



1. At Bueng Nong Bon Flood Control Center (moved from Phasi Charoen)
2. Weather Radar Station Along the Bang Phai Canal, Nong Khaem District with effective range of 240 km (480-km Spectral Width)
3. At the BMA's Training and Development Institute, with effective range of 240 km (480-km Spectral Width)



**Department of Drainage and Sewerage
Bangkok Metropolitan Administration**

BMA Flood Control Center

Four contact channels:

Website: <http://dds.bangkok.go.th>

Facebook: bkk.best

Twitter: bkk_best



**Telephone:
0 2248 5115**